

An abstract painting with a textured surface, featuring a mix of yellow, green, and red tones. The composition is dense and layered, with various brushstrokes and colors blending together. The overall effect is vibrant and dynamic.

Spring Show 2021

Sarah O'Kane Contemporary Fine Art

sarah@sarahokane.co.uk

07777 691 050

Nick Bodimeade

Nick Bodimeade combines formal compositions, glorious use of colour and visceral brushwork to create oil paintings which are finely poised between the figurative and the abstract, and which range from very small works on board through to large-scale canvases. 'I am interested in how everyday life can be turned into painting and the transformations that take place in that process. I love the point when paint becomes more than just "stuff", or when image dissolves into material. There always seems the potential for magic at this moment of transformation. The model for me is Monet's Water Lilies: there is a clear relationship with the observed world but it's also truly about colour, abstraction and the paint. It's a matter of getting rid of space so there is no sense of the hierarchical forms or art - the foreground, and middle ground - to transform it into abstracted, invented space.' Born 1957, Nick trained at Wolverhampton. For several years he was Head of Fine Art at Buckinghamshire Chilterns University College before becoming a full-time painter in 2009, working in his studio at the foot of the South Downs. His art is widely collected throughout the UK and internationally.



Caburn 1
oil on panel 22 x 26cm
£540



Caburn 2
oil on panel 21 x 25cm
£540



Caburn 3
oil on panel 22 x 26cm
£540



Caburn 4
oil on panel 25 x 21cm
£540

Continued ...

Nick Bodimeade

...continued



Caburn
oil on canvas 90 x 100cm
£3,000

Nick Bush

'My work is about moods generated by landscape.'

Nicholas is an artist and teacher who lives and works in Newhaven. He studied Fine Art at the Glasgow School of Art, graduating in 2010 and then completed a postgraduate degree in Drawing at the Royal Drawing School in London. Recent group exhibitions include the RA Summer Exhibition, the Lynn Painter Strainers prize and the ING Discerning Eye.

'My artistic process start by sitting in the open with my portable easel and painting on small panels. In painting from the landscape, my focus is sharpened and I discover things which have a vivid life of their own. These works resurface in the studio whilst I work on larger canvases. Drawing has always been a key tool for discovery and experimentation. Although, I consider myself a landscape painter, I will not stop from filling up empty corners of a work with fragments of life imagined or elsewhere.'



Beachy Head Lighthouse
oil on board 24 x 30cm
£400



Chasing a Ball, Bastion Steps
oil on board 24 x 30cm
£400



The Ferry Leaving Harbour at Dusk
oil on board 16 x 20cm
£400



The Skeleton Pier
oil on board 24 x 30cm
£400

Continued...

Nick Bush

continued...



Hope Gap (with Rock Pippit)
oil on canvas 81 x 81cm
£1,600



Cypress Trees
oil on board 16 x 21cm
£400

Chris Gilvan-Cartwright

Chris Gilvan-Cartwright, aka The Baron Gilvan, is a painter, performer and animator. Graduating from Central St Martins he won a bursary to paint in India and Nepal. Chris also trained at Krakow Academy of Fine Arts and University of Brighton. He has exhibited extensively and performed at Jerwood Gallery, Hastings. Chris has taught for over twenty years from Foundation to Degree level and illustrated many children's books. He was artist in residence at Glyndebourne Opera in 2019.

Chris grew up in Germany the son of an opera singer: the rich, visceral experience of opera is his abiding influence. 'It is the magnificence, the frailty and the epic nature I'm interested, the elements of chaos.' Chris likens his paintings to one visual opera or scenes in an Act. 'They are interlinked, a continuous narrative; sometimes they about each other, sometimes they stand alone,' he explains. 'Landscapes are scenery, there is theatrical lighting and sometimes figurative aspects and cameo roles which exit the scene. The second aspect of my work is the pure joy of painting.' His paintings are also rooted in the motifs of medieval and Northern Renaissance.

Shown for the first time in the Spring Show are a selection of Chris' new paintings inspired by The Bevin Boys, the young men conscripted to mine coal during WWII .



Lampman
oil on canvas 24 x 18cm
£495



Drawer
oil on canvas 24 x 18cm
£495



Viewer
oil on canvas 24 x 18cm
£495



Lampman
oil on canvas 24 x
18cm
£495

continued ...

Chris Gilvan Cartwright

...continued



Der Holle Rache (from The Magic Flute)
oil on canvas 120 x100cm
£3,450

Geoff Hands

Geoff's practice involves both plein air and studio work in painting and drawing, augmented by collage and printmaking. Though his practice has most often engaged with landscape and seascape, since 2015 his paintings have developed towards a more overtly abstract resolution and a growing awareness of contemporary painting's place in art history. A dedication to and celebration of painting and drawing are intrinsic to his abstraction. A garden in his native Shropshire, and contemplation of Watteau's *fete gallante* 'Pilgrimage to Cythera' and *fete d'amour* paintings have been part of the creative process of the paintings in this exhibition.

In making these images he continues to link decisions to places and memories, both visual and in feeling. Intuitive decisions and chance developments in the painting process play their part too. The image will develop its own persona in the studio with the time of day, light conditions, sounds and atmospheres contributing to the making of the paintings.

Geoff Hands graduated from West Surrey College of Art & Design with a degree in fine art painting in 1979 and has a studio at The Phoenix in Brighton.



Wenlock Edge (Venus) 1
oil on linen 40 x 62cm
£660



Wenlock Edge (Venus) 2
oil on linen 40 x 62cm
£660



Wenlock Edge (Venus) 3
oil on linen 40 x 62cm
£660



Wenlock Edge (Venus) 4
oil on linen 40 x 62cm
£660

continued...

Geoff Hands

...continued



After Watteau 1
acrylic on canvas 24 x 30cm
£260



After Watteau 2
acrylic on canvas 24 x 30cm
£260



After Watteau 4
acrylic on canvas 24 x 30cm
£260



After Watteau 6
acrylic on canvas 24 x 30cm
£260

Jo Lamb

Jo creates abstract paintings alongside her more figurative work but both are as much about colour and composition as they are about story-telling. Recurring themes include the circus, fairground, childhood and family memories, which in her art takes on a universal quality. Other paintings draw on scenes and events taken from life lived in Africa, visits to Scotland, Oman and Norway and, closer to home, Newhaven and Lewes. The finished artworks are arrived at through a series of drawings, versions, photographs and a meditative approach to making the colour work. This and the intrinsic structure of her compositions are the evolving fruits of her training in both Painting (Byam Shaw School of Art) and Design & Printed Textiles (Camberwell School of Arts and Crafts).



Climbing the Wall (framed)
acrylic on paper 45 X 57cm
£500 framed



Escape to the Country (framed)
acrylic on paper 38 x 58cm
£400 framed



Walking with the Massai
acrylic on paper 28 x 41cm
£340 unframed



Stairway to Heaven
acrylic on paper 31x 39cm
£340 unframed

Kathleen Mullaniff

Kathleen Mullaniff was born in County Longford in the Republic of Ireland. She trained as a fine art painter at Camberwell College of Art and Design and Goldsmiths College. Kathleen has been a senior lecturer at Middlesex University BA Fine Art course since 1990 and was a founder member of Chisenhale Studios and Gallery (1981-2007). She has exhibited far and wide including in 'Painting as a Foreign Language' at Cultura Inglesa, Sao Paulo (2002). In the same year she was awarded an Arts and Humanities Research Council grant to research the botanical drawings of Les Roses, by Pierre-Joseph Redouté. Most recently she has exhibited in Personal Relations and Pulchri Studios, The Hague and Vernissage, Vincenza, Italy. Her work was selected for The Royal Academy Summer Exhibition 2020. Kathleen is a member of The London Group.



Still Summer Garden
oil on board 18 x 25cm
£250



Rust Red Garden
oil on board 18 x 25cm
£250



Summer Pink
oil on board 18 x 25cm
£250



Dusk
oil on board 18 x 25cm
£250

Continued ...

Kathleen Mullaniff

... continued



Breeze
oil on board 18 x 25cm
£250



Beech Tree
oil on board 18 x 25cm
£250



Disappear
oil on board 18 x 25cm
£250

Keith A Pettit

Frequently working with found wood, Keith Pent immerses himself in a process of seeking and revealing sculptural form, using techniques such as carving, chain-sawing, burning and oiling. He produces large-scale sculptures for public spaces including Sheffield Park National Trust, and Farleys Sculpture Garden, as well as for private commissions. I am now exhibiting medium-scale works, The Garden Collection.

'I aim to create sculpture that feels almost like the environment has conspired to create the object, a sense of growth rather than something that has imposed itself in the site. I passionately draw my inspiration from the history, landscape and natural history to give a real sense of place. Using natural and locally occurring materials to ensure it sits as sympathetically within any chosen site. With all my sculpture I am keen to explore the process of ageing and decay, to ultimately abstract and enhance the work.'



Tall Breeze
elm 159 x 15 x 7cm
£500



Henge: Among the Tall Grasses
oak £1,600

Keith A Pettit



Left to right: Fire Formed 1 and Fire Formed 2, each £1,000 Strength of Connection £900, Grown £900, all oak

Rachael Plummer

There is no way, one makes a way by walking... Antonio Machado

Rachael is a Sussex painter who is alive to the possibilities of translating nature into art. She has 'a completely achieved personal visual language' in the words of artist/writer Julian Bell. Her earlier life was spent in the Channel Islands and the sense of fleeting light, of edges and space, of changing conditions is ever-present in her abstract compositions.

Rachael's paintings contain the dynamic notion of orbiting, rarely settling on solid forms or perspective. Her thoughtful, sometimes hard-won oil and pure pigment paintings bring to us a sense of freedom and even joy, reconnecting us with the natural world where all is 'simultaneous and various.' Rachael's studio is in Lewes. She exhibits in London and Lewes and has a wide circle of collectors. This new collection of paintings is about 'land and landing; being on the edge of - life, work, the world... .walking, reconnecting, touching down, and the South Downs.'



Touch Downs 1
oil on panel 16 x 26cm
£295



Touch Downs 2
oil on panel 12 x 20cm
£210



Touch Downs 3
oil on panel 21 x 20cm
£310

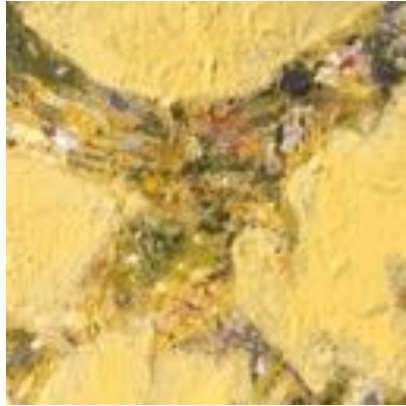


Touch Downs 4
oil on panel 40 x 50cm
£640

continued...

Rachael Plummer

... continued



Touch Downs 5
oil on panel 11 x 11cm
£180