

An abstract painting featuring a vibrant palette of colors including yellow, green, blue, orange, pink, and black. The composition is composed of various organic, rounded shapes and thick brushstrokes, creating a sense of movement and depth. The background is a mix of dark blue and purple tones, with lighter areas in yellow and green. The overall style is expressive and contemporary.

# Artwave Festival Show 2021 Catalogue

Sarah O'Kane Contemporary Fine Art  
[sarah@sarahokane.co.uk](mailto:sarah@sarahokane.co.uk)  
07777 691 050

# Nick Bodimeade

Nick Bodimeade combines formal compositions, glorious use of colour and visceral brushwork to create oil paintings which are finely poised between the figurative and the abstract, and which range from very small works on board through to large-scale canvases. 'I am interested in how everyday life can be turned into painting and the transformations that take place in that process. I love the point when paint becomes more than just "stuff", or when image dissolves into material. There always seems the potential for magic at this moment of transformation. The model for me is Monet's Water Lilies: there is a clear relationship with the observed world but it's also truly about colour, abstraction and the paint. It's a matter of getting rid of space so there is no sense of the hierarchical forms or art - the foreground, and middle ground - to transform it into abstracted, invented space.' Born 1957, Nick trained at Wolverhampton. For several years he was Head of Fine Art at Buckinghamshire Chilterns University College before becoming a full-time painter in 2009, working in his studio at the foot of the South Downs. His art is widely collected throughout the UK and internationally.



Ouse Fork Path 1  
oil on canvas 90 x  
100cm £3,000



Caburn and Dewpond  
oil on canvas 90 x  
100cm £3,000



Southerham  
oil on canvas 90 x  
100cm £3,000



Paper Mill Cut  
oil on canvas 46 x  
36cm £1,000

continued...

Nick Bodimeade / 2



Ditchlight 4  
oil on canvas 36 x  
31cm £780



Ditchlight 5  
oil on canvas 36 x  
31cm £780

# Nick Bush

'My work is about moods generated by landscape.'

Nicholas Bush is an artist and teacher who lives and works in Newhaven, East Sussex. He studied Fine Art at the Glasgow School of Art, graduating in 2010 and then completed a postgraduate degree in Drawing at the Royal Drawing School in London. Recent group exhibitions include the RA Summer Exhibition, the Lynn Painter Strainers prize and the ING Discerning Eye.

"My artistic process starts by sitting in the open with my portable easel and painting on small panels. In painting from the landscape, my focus is sharpened and I discover things which have a vivid life of their own. These works resurface in the studio whilst I work on larger canvases. Drawing has always been a key tool for discovery and experimentation. Although, I consider myself a landscape painter, I will not stop from filling up empty corners of a work with fragments of life imagined or elsewhere."



Beachy Head I  
oil on resin-coated card 22 x 30cm  
£380



Beachy Head II  
oil on resin-coated card  
22 x 30cm £380



Calm Sea, Seaford  
oil on resin-coated card  
22 x 27cm £380



Shorebreak, Seaford  
oil on resin-coated card  
22 x 30cm £380

continued...

Nick Bush / 2



Hope Gap  
oil on resin-coated card  
23 x 27cm £380



Hope Gap  
oil on resin-coated card  
23 x 27cm £380



View of a framed Nick Bush  
painting

# Philippa Cannan

Philippa graduated in Fine Art Painting in 2010, having been tutored by the acclaimed artist Andrzej Jackowski, Professor of Painting at University of Brighton. Philippa says of her art: 'I hope to create a sense of timelessness in my work and for each painting to convey a feeling of its own reality: a felt or imagined space, to which the viewer may respond,' she says. 'Animals, perhaps, symbolise life's deepest energies: instinctual life. In my work, the momentary glimpses are taken, through the process of painting, into an arena of day-dream, memory, or reverie, or perhaps what Freud described as 'free-floating attention.'



Cobalt Blue  
oil on canvas  
60 x 60cm  
£975



Complicity  
oil on canvas 100 x 100cm  
£2,250



Freedom  
oil on canvas 60 x 60cm  
£975



Winter Night  
oil on canvas 60 x 60cm  
£975

Continued...

# Philippa Cannan



Kings Blue  
oil on canvas 60 x 60cm  
22 x 30cm £975



Chestnut Mare  
oil on canvas 25 x 25cm  
£325

continued...

# Jane Hansford

Jane's work displays a strong painterly quality, underpinned by drawing and driven by a fertile imagination. Her paintings often centre around the development of characters, weaving together elements of eroticism, dark humour and sharp observation. Jane revisits art historical sources to reimagine and re-tell the great themes and dynamics of life. There are references to fashion and costume as well as commercial and art photography. The floating landscape of Japanese art are also an influence. A parallel theme in Jane's work is the English garden. Jane expresses her fascination and fondness for this subject this through her beguiling textured style of painting, exploring colour and space. Jane graduated in 2008 with a First Class BA Honours degree in Fine Art from Buckinghamshire & Chilterns University College, tutored by Nick Bodimeade. After graduation, she met with immediate success. Her paintings are in collections throughout the UK and Europe.



Meadow Garden oil on  
canvas 80 x 100cm  
£2,500



Blue Tit Twins  
oil on canvas 93 x 105cm  
£2,500



Yellow Dress  
oil on canvas  
board 20 x  
20cm £340



Seated Woman (after  
Hopper)  
oil on board 25 x  
30cm £540

Continued ...



Jane Hansford /2



Willow Pond  
oil on canvas board 30  
x 40cm £450



Seated Woman  
(after Gentileschi)  
oil on linen 20 x  
18cm £340



Pink Bed (after  
Matisse)  
oil on linen  
15 x 18cm  
£340



Beach Hut  
oil on linen 13 x  
18cm £340

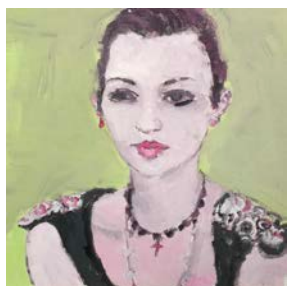


Inner Garden  
oil on canvas board  
20 x 20cm £340

Jane Hansford /3



Quiet Time  
oil on linen board 18  
x 13cm £340



She's Familiar  
oil on board 20 x  
20cm £340



Woman in a Lovely Dress  
unframed drawing £180  
From a selection



Hyacinths  
oil on canvas 37 x  
41cm £450

# Julian Le Bas

Born in 1958, Julian Le Bas is a contemporary master of plein air painting and drawing. His oil paintings and robust charcoal drawings re-awaken a sense of our presence and emotional involvement in the natural world. The process of drawing or painting from observation envelops his landscapes in the nuances of light rolling across the Sussex Downs. He was tutored at Brighton Polytechnic by Dennis Creffield - who was a pupil of David Bomberg and a fellow member of the Borough Group - and so Julian continues the practice of bringing weight and volume into light and space. Julian's work is widely collected and his artworks are held in public art collections: Towner Gallery, Hove Museum & Art Gallery, South East Arts Collection. Exhibitions include Jerwood Prize Touring Exhibition. 'I am inspired by the natural world, and seek to convey its essence of form and light. By working directly within the landscape, I aim to deepen my emotional connection with it.' Julian Le Bas, January 2020



Shifting Clouds over Mount  
Caburn and Firl Beacon  
oil on canvas 30 x 46cm  
£750



Sunset, Low Tide  
Cuckmerehaven  
oil on canvas 30 x 46cm  
£750



Stormy Weather, Hope  
Gap, Winter 30 x 46cm  
£750

# Jo Lamb

Quirky narratives, charming visions and occasional bogeymen inhabit Jo Lamb's singular pictorial world. Recurring themes include the circus, fairground, childhood and family memories, which in her paintings take on a universal quality. Other paintings draw on scenes and events taken from life lived in Africa, visits to Scotland, Oman and Norway and, closer to home, Newhaven and Lewes. Jo's paintings may look simple but have often been arrived at through a series of drawings, versions, photographs and a meditative approach to making the colour work. Her paintings are as much about colour and composition as they are about storytelling. These and the intrinsic structure of her compositions are the evolving fruits of her training in both Painting (Byam Shaw School of Art) and Design & Printed Textiles (Camberwell School of Arts and Crafts). Jo is also engaged with design and illustrative commissions and through this growing body of work she has developed the characters of Fluffy and Feral Housewife.



Walking on the Downs  
oil on canvas 30 x  
40cm £400



Sheffield Park  
Lockdown  
oil on canvas  
30 x 40 £400



Taking a Trip  
Acrylic on paper 28 x  
37cm £500

# Jane Merfield

Jane trained in painting and sculpture at Camberwell and University of Brighton. On graduating in 2001, she was awarded the Alan Davie Prize and the Open University Purchase Prize. She now concentrates on painting and works in her Lewes studio.

Jane regards her time spent living abroad as crucial to her art as her formal training. Several years teaching, painting and generally living a simple life in the depths of the Italian countryside were followed by a year on the southernmost tip of mainland Greece. 'Certain imagery from this land of ghosts has never left me and I continue to return there whenever possible,' she says. 'Some places and imagery just have a habit of resurfacing in my memory. They may not be that extraordinary visually but they always have a peculiarity of atmosphere. I take these fleeting images and work and play, using matt and gloss paints, adding pattern and relief to disrupt the surface until something of that original oddness looks back at me.'

'Clarity of form is important as ever but there has been a relaxing of the cuttngly sharp clean lines. I seem to be heading towards an ever more abstract language, but am still working from an internal view of the world. The paintings grow slowly in layers, over time, with the intuitive dialogue which grows between the painter and the canvas having more space to develop. Not quite knowing where I am heading is really very exciting and stimulating.'



Cave  
oil on canvas  
40 x 50cm £550



Sculpture Park in  
Norway  
oil on canvas  
40 x 50cm £550

# Kate Montgomery

Kate Montgomery studied at The Ruskin School of Drawing & Fine Art, St John's College, Oxford and then Royal College of Art in London, graduating in 1992. In the same year Kate was artist in residence at the Prince of Wales' Institute of Architecture. Her work is held in both private and public collections around the world.

Kate lives on the south coast: sources for her paintings are found through walking in the Sussex countryside, running by the sea, and the interiors and gardens of Georgian and Victorian houses and museums in Brighton & Hove. Kate's paintings often suggest interior spaces associated with female responsibility, creativity and desire. Silent houses with children playing outside, workrooms, a costume gallery... Real time and space are avoided, permitting personal histories and fictions to be read.



Looking at the Sky,  
casein on board  
21 x 15cm £780



The Yellow Wallpaper  
casein on board  
21 x 15cm £780



Painting Smock  
casein on board  
15 x 21cm £780

Storm Passage  
casein on board  
15 x 20cm £780



# Keith A Pettit

'I aim to create sculpture that feels almost like the environment has conspired to create the object, a sense of growth rather than something that has imposed itself in the site. I passionately draw my inspiration from the history, landscape and natural history to give a real sense of place. Using natural and locally occurring materials to ensure it sits as sympathetically within any chosen site. With all my sculpture I am keen to explore the process of ageing and decay, to ultimately abstract and enhance the work.'

Frequently working with found wood, Keith Pettit immerses himself in a process of seeking and revealing sculptural form, using techniques such as carving, chain-sawing, burning and oiling. He produces large-scale sculptures for public spaces including Sheffield Park National Trust, and Farleys Sculpture Garden, as well as for private commissions. I am delighted to introduce medium-scale works for placing outdoors, The Garden Collection, in Artwave.



Fire Formed 1  
106cm high  
oak £1,000



Fire Formed 2  
106cm high  
oak £1,000



Strength of  
Connection  
126cm high  
Oak £900

# Charlotte Snook

Charlotte Snook creates small oil on board paintings, rich with colour, composition and light. The notion of human folly is integral to her practice. Her heroes are artists who have dealt with this notion throughout the history of art. She often draws on and annexes visual and literary references from Grandville to Goya and Shakespeare to Flaubert and reworks them into a personal iconography. Ideas are condensed into an intense small-scale arena of her paintings.

Her art allows for the apocalyptic nature of the world. 'They are concerned with a loss of paradise,' Charlotte says. 'It's all about the painting: light, colour, contrast, the composition and brushstrokes. I try to set a narrative without there being one.' Her drawings, which can be huge, underpin her practice and show what an accomplished, knowledgeable and insightful artist she is. Dana Brass has written: 'The work takes us to the edge and asks us to question what we see. As a viewer one looks for a safe place to rest - places to identify and name. Snook gives us a platform to jump from ... but the excitement of these work is there is no place to truly land or settle.'

Charlotte trained at Hornsey School of Art and Royal College of Art. Until 2009 she was a senior lecturer at Central St Martins College of Art and Design. Recently Charlotte has exhibited her work in group shows at Jerwood Gallery, Hastings (now Hastings Contemporary) and Bermondsey Project Space. In 2018 she held her second solo exhibition with Sarah O'Kane, titled Studio Paintings and Other Stories.



Fortune's Reward  
oil on board 19 x 25cm  
£700



Death of Patroclus  
oil on board 16 x 21cm  
£600



# Julian Sutherland-Beatson

Julian lives and works in Eastbourne and takes his inspiration from the Sussex countryside as well his extensive city travels. Julian is a regular exhibitor at Glyndebourne Opera House. His work is in private and public collections around the world, including The House of Lords. His paintings have also been selected twice for the Royal Academy Summer Exhibition. 'The main theme of my work is the marking and celebration of a specific time and place. I aim to mark the changing mood and seasons reflected in the world around me. The work reflects the prevailing seasonal conditions yet it is also affected by my emotional mood and my need for say, sun, cold, or just something different. These inform the work to a large extent and the paintings are a record of a particular point in my life.'



Out of the Sea  
acrylic on board  
20 x 20cm £295



Palais du Bourbon  
acrylic on board  
41 x 41cm £390



Gothic Quarter,  
Barcelona  
acrylic on box  
canvas 30 x 30cm  
£295



Place de la Concorde  
Mixed media on box  
canvas 60 x 50cm  
£420

Continued...

# Julian Sutherland-Beatson

- ...Continued



Under the Eiffel Tower  
acrylic on board 20 x  
20cm £295



Orangella  
acrylic on board 100 x 100cm  
£1,950

Sarah O'Kane Contemporary Fine Art

[sarahokane.co.uk](http://sarahokane.co.uk)

07777 691 050

[sarah@sarahokane.co.uk](mailto:sarah@sarahokane.co.uk)